

® mica

INSTRUCTIONS FOR MICA HL-100 and HB-57

INSTRUCTIONS FOR MICA HL-100 and HB-57

Read these instructions carefully, as proper usage will lengthen the service life of your MICA lamp.

DIFFERENT VERSIONS

The MICA HL-100 lamp is available in three different versions: a headband version, a helmet band version (i.e., a model that attaches to a helmet with rubber bands/plastic hooks), and a helmet clip version that fits light holders on most helmets. Note the band version of your lamp when you order spare parts!

LAMP USE

Check that the battery is fully charged and connected to the lamp. The rotating knob on the right side of the lamp operates as a switch (half power/full power/off). At half power, the light source for the HL-100 lamp is a small white LED, and at full power, a LUXEON ® high-intensity LED. The light output of a LUXEON LED is equivalent to that of a 4-watt halogen bulb. The minimum maintenance-free LED bulb service life is 50,000 hours.

The lamp angle is adjusted using the set screw on the left side.
An HB-57 series or MICA NM-600 series battery may be used as the battery for a MICA HL-100 lamp. *There are separate instructions for NM-600 batteries.* The lamp is connected to the batteries with a three-pole quick-connector.

OPERATING TIMES with HB-57 battery	Half power
LUXEON LED	more than 2 weeks
HB-57	30 h

TECHNICAL INFORMATION

MICA HL-100 LAMP

Operating temperature: -20...+40 °C
 Protection class: IP 66/67
 Weight: 400 g
 Bulbs: 1 W LUXEON LED and white 5 mm LED

HB-57 BATTERY

Operating temperature: -20...+40 °C
 Battery pack: NiMH 6 V 9.0 Ah
 Weight: 1100 g
 Protection class: IP 54

ILC CHARGER

Input voltage: 12...30 VDC
 Charging current: 750 mA autom.
 Protection class: IP 20
 See also separate instructions for ILC.

TERMS OF WARRANTY

There is a one-year warranty on the lamp and battery. The warranty period is considered to begin at the time of lamp purchase. The warranty covers defects in manufacturing and raw materials according to generally observed warranty terms. During the warranty period, the lamp may only be serviced by authorised MICA service agents. When in need of warranty servicing, please contact the lamp retailer.

Additional information available directly from Mica Elektro Ltd or on our website.

© Mica Elektro Oy LTD. 01-2007. All specifications are subject to change without notice.



— mica —
— e l e k t r o —

Mica Elektro Oy LTD.
 POB 42, FIN-00381 Helsinki, FINLAND
 tel.: +358-9-5617 666 fax: +358-9-5617 6688
 e-mail: info@mica.fi internet: www.mica.fi

HB-57 BATTERY USE

A new battery must be charged for 16 hours without interruption before being used for the first time. During lamp use, note that the battery must be fully charged and discharged approximately 10 times before it reaches its true capacity.

An LED matrix indicates the state of charge during use of the battery. Battery electronics monitor temperature and charge and protect the battery from deep discharge and short-circuit. The low battery warning on the MICA HB-57 is blinking light at 15-second intervals. When blinking begins, approximately 30 minutes of operating time remain. The control electronics shut off the lamp automatically before deep discharge of the battery.

CHARGING THE SERIES HB-57 BATTERY

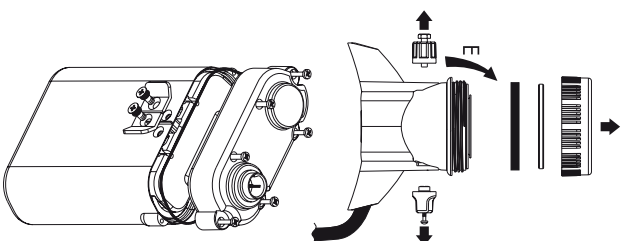
The HB-57 battery may only be charged using a MICA ILC charger. Charging temperature is +0 °C...+40 °C. Charging time from empty to full is 12 hours. Voltage supply (12...30 V) is provided by an IL-1 mains adapter or a 12/24 V vehicle battery. **ATTENTION!** The supply voltage must not be interrupted by a timer or by other means. The battery should be stored in its charging holder after use. *See also separate instructions for MICA ILC charger.*

LAMP DISASSEMBLY

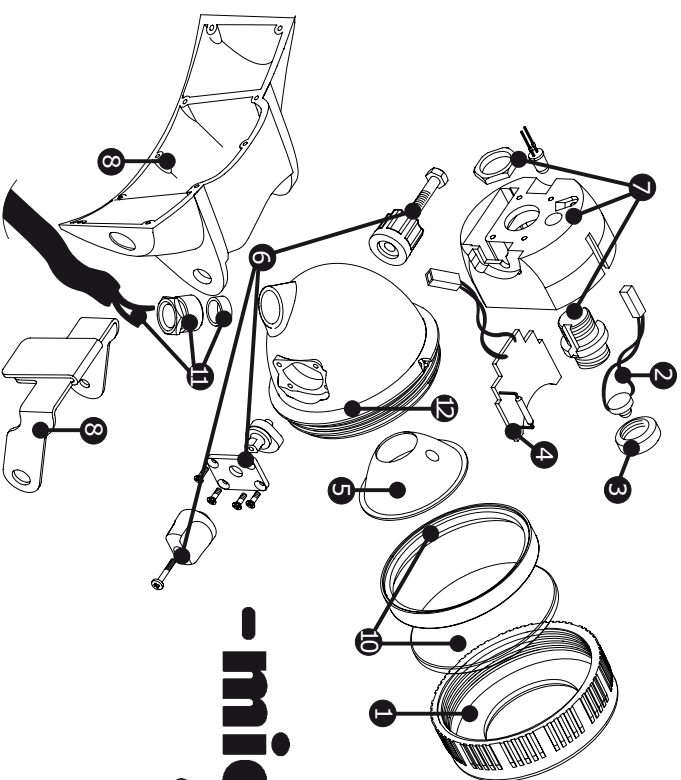
- Disconnect the battery from the lamp.
- Open the locking ring.
- Unscrew the lamp adjustment screw.
- Open the switch securing screw and remove the connector knob.
- Turn the housing (12) to detach from the bracket.
- Pull the cup portion out of the bracket piece.
- Open the screw of the strain relief.
- Pull the slide-in assembly out of the housing.

CHANGING THE BATTERY PACK (series HB-57 batteries)

- Disconnect the battery from the lamp.
- Unscrew the charging contacts from the casing.
- Open the lid fixing screws (6)
- Open the lid and pull the slide-in assembly out of the casing.
- Detach the battery pack cables from the circuit card.
- Exchange the battery pack and connect the cables to the circuit card.
- Check that the connectors are on the circuit card correctly.
- Place the slide-in assembly back into the housing and fasten the charging contacts.
- Arrange the cables carefully inside the casing.
- Check that the O-ring seal is in place and close the lid



SPARE PART LIST FOR HL-100 LAMPS	
1	H0031_1 Locking ring
2	H0048_1 1 W LED unit
3	H0049_1 1 W LED unit locking ring
4	H0034_2 LED circuit card and fixing screw
5	H0035_2 Reflector, LED model
6	H0036_1 Switch and angle adjustment assembly with screws, plastic for bracket piece
7	H0036_2 Switch and angle adjustment assembly with screws, stainless steel for bracket piece
8	H0037_2 Slide-in assembly 1 W LED
9	H0038_1 Bracket piece (plastic) and headband
10	H0038_2 Bracket piece (plastic) and helmet band
11	H0038_3 Bracket piece for helmet (stainless steel), spacer plates, connector knob
12	H0039_1 Rubber band set for headband
9	H0039_2 Rubber band set for helmet band
10	H0040_1 Lens and seal
11	H0041_1 Cable set (cable set, quick-connector, strain relief)
12	H0042_1 Lamp housing
12	H0043_1 Padding for band
12	H0047_1 Hook set for HL helmet band (4 pieces plate + hook)



-mica-
RLC

ATTENTION! When ordering spare parts, always provide the type and serial number of the lamp / charger!

SPARE PART LIST FOR HB-57 BATTERY PACK

- H0051_1 Battery pack (NiMH)
- H0052_1 Slide-in assembly
- H0053_1 Casing assembly with screws
- H0054_1 3-pole quick-connector (female)
- H0055_1 Circuit card and fixing screws
- H0056_1 Charging contacts (includes screws and seals)
- H0058 Seal
- 11415 Leather holster

